



**WORLD'S BEST  
ALLOY BULLBARS**

**East Coast Bullbars (ECB Pty Ltd)**

Tel: 07 3897 5700

Fax: 07 3283 1168

ecb@ecb.com.au www.ecb.com.au

29 Snook St  
Clontarf QLD 4019  
Australia

Po Box 122  
Margate QLD 4019  
Australia

**BJ70SY**

REPLACES: 28.06.10

REVISED: 08.08.11

## **FITTING INSTRUCTIONS**

### **JEEP GRAND CHEROKEE 08/08- BIG TUBE™ BAR WITH FOG LIGHTS VEHICLE FRONTAL PROTECTION SYSTEM (VFPS) FOR AIR BAG & ADR COMPLIANT VEHICLES**

Check installation hardware before commencing.

1. Lift bonnet.
2. Remove grille. Six plastic clips along top, lean forward and upward to remove. **See figure 1.**
3. Remove bumper cover. Six plastic push in/out clips along top, three 10mm head bolts and two plastic christmas tree plugs at central bottom, one 7mm head self-tapper (each side) at top of side returns, two plastic clips (each side) from inner guards. **NOTE:** Inner guard clips are not reusable, cut off inner protrusion with side cutters. Disconnect fog lights. If fitted disconnect parking sensors from under passengers side front chassis end by sliding red safety keeper toward side of connector and pushing rear centre lever to split apart.
4. Remove front chassis covers. Two 10mm head bolts. **See figure 2.**
5. Remove towing bracket from driver's side, three 15mm head nuts. Remove original equipment nut plates and discard.
6. Insert double and single bolt plates (supplied) (each side) into chassis. **See figures 3 and 4.**
7. Trim sides from centre plastic bumper support. **See figures 5 and 6.** Cut inner plastic arch at bottom of front guard so lower part of inner arch can slip behind end cap on protection bar.
8. Attach steel mounting brackets (supplied) to bolt plates. Use 3/8 nuts, flat washers and spring washers (supplied). **FINGER TIGHTEN ONLY. See figure 7.**
9. Align steel mounting brackets square and central to vehicle and at correct measurement for protection bar to mount on outside of steel mounting brackets. **TIGHTEN ALL NUTS.**
10. Using 10mm slot in steel mounting brackets as a guide, drill two 10mm holes (one each side) through lip on cross member. Ensure holes are drilled in centre of lip. **Treat all exposed metal with a rust inhibitor.** Use 3/8 x 1 1/2 bolts, nuts and washers (supplied). **TIGHTEN. See figure 8.**
11. Splice ECB indicator / park light wiring into original wiring. Use cable locks (supplied). Wiring is easily accessed from under headlights.
12. Cut original plug from fog light wiring and splice ECB fog light wiring into original fog light wiring.
13. Refit grille to vehicle.
14. Fit ECB indicators / park lights into protection bar. Use two 10g x 15 stainless steel self-tappers (per light) over clamp plate and into front surround. **See figure 9. NOTE: Left and right / park light to outside.**



**WORLD'S BEST  
ALLOY BULLBARS**

**East Coast Bullbars (ECB Pty Ltd)**

Tel: 07 3897 5700

Fax: 07 3283 1168

ecb@ecb.com.au www.ecb.com.au

29 Snook St  
Clontarf QLD 4019  
Australia

Po Box 122  
Margate QLD 4019  
Australia

15. Attach ECB fog lights to protection bar. Place M6 x 20 bolts, spring washers (supplied) through light mount from inside and attach nut to top. Slide assembly into light mount in Protection bar and centralize light to hole.  
**TIGHTEN FIRM ONLY. Do not fit fog light trims at this stage.**
16. Fit ECB 6mm black clip lock trim (supplied) to rear centre of protection bar and two pieces of infill trim to outer sections of protection bar. Outer sections can overhang centre of bar and be tucked in behind grille. Trim off underside and top to follow protection bar. **See figures 11, 12 and 13.**
17. For vehicles with front parking sensors. Remove parking sensors from holders in rear of plastic bumper. Using a sharp flexible knife, remove parking sensor holder from rear of plastic bumper. **See figure 18.** Refit sensors to holders. Clean inside of ECB protection bar with grease remover or similar. Using loctite gel adhesive (supplied) glue sensors to rear of ECB protection bar, **see figure 19 and 20**, ensuring sensors are central to holes and correctly seated in original clear plastic protector ring. Wiring runs between lower mount and skirt to outside sensors. Failure to replace original plastic protector rings may result in damage to sensors.
18. For vehicles without parking sensors. Using a soft mallet, gently push plastic button plugs into park sensor holes in front of ECB protection bar. **Caution:** Excessive force will damage plugs.
19. Fit protection bar to outside of steel mounting brackets. Use ½ x 1 ½ bolts, nuts, spring washers and washers (supplied). **FINGER TIGHTEN ONLY**
20. Align protection bar level with vehicle. See front and side views **figures 21 and 22. TIGHTEN ALL BOLTS/NUTS.**
21. Connect indicator / park lights and check operation.
22. Fit fog lights into fog light brackets. **TIGHTEN FIRM ONLY.** Connect fog lights and check operation.
23. Aim fog lights with low beam. **TIGHTEN ALL BOLTS.** Fit ECB fog light trims (supplied) to protection bar, wider part of trim to inside.
24. Connect parking sensors.
25. Tidy all wiring.
26. Fit under body protection plate (supplied) to inside bottom of skirt and to vehicle using three M6 x 20 bolts, flat washers and nyloc nuts (supplied). Use existing three 10mm head bolts and 2 x Christmas tree clips(supplied) on vehicle to fit rear of under body protection plate.

#### **ENSURE THESE INSTRUCTIONS ARE LEFT WITH VEHICLE OWNER AND/OR OPERATOR**

**NOTE:** Towing points are incorporated into steel mounting brackets, which are accessed through air intake cut outs in protection bar skirt. These are designed to be used for straight line towing and light snatching using an elastic type snatch rope and joiner rope. Always take care when towing or snatching and observe safety requirements of equipment being used.

**Note:** When fitting/refitting the licence plate to the vehicle, ensure there is no obstruction to licence plate vision in accordance with local authorities. If required relocate licence plate to an alternate location.



East Coast Bullbars (ECB Pty Ltd)

Tel: 07 3897 5700

Fax: 07 3283 1168

ecb@ecb.com.au www.ecb.com.au

29 Snook St  
Clontarf QLD 4019  
Australia

Po Box 122  
Margate QLD 4019  
Australia

**WORLD'S BEST  
ALLOY BULLBARS**

**Further VFPS Notes:**

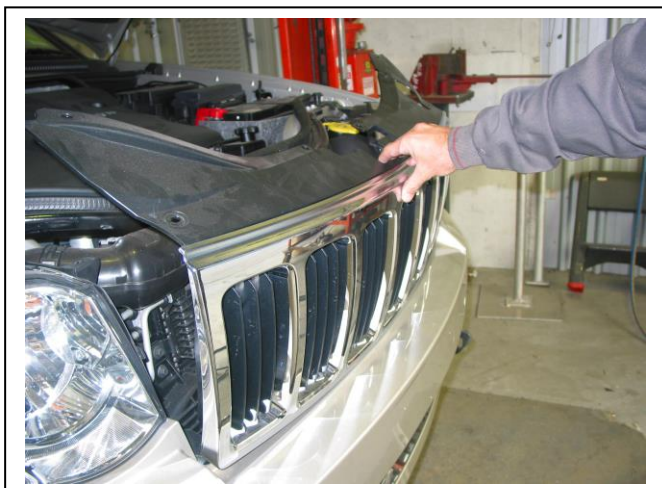
- a) Do not attach VFPS to the vehicle using anchorages not intended for this purpose (e.g. engine mounting bolts).
- b) Do not use this product for any vehicle make or model, other than those specified by the VFPS manufacturer.
- c) Do not remove the plaque or label from the VFPS.
- d) Do not modify the structure of the VFPS in any way.
- e) No accessory or fitment should project forward of the VFPS forward profile.
- f) **ENSURE THESE INSTRUCTIONS ARE LEFT WITH VEHICLE OWNER AND/OR OPERATOR.**

**IMPORTANT INFORMATION**

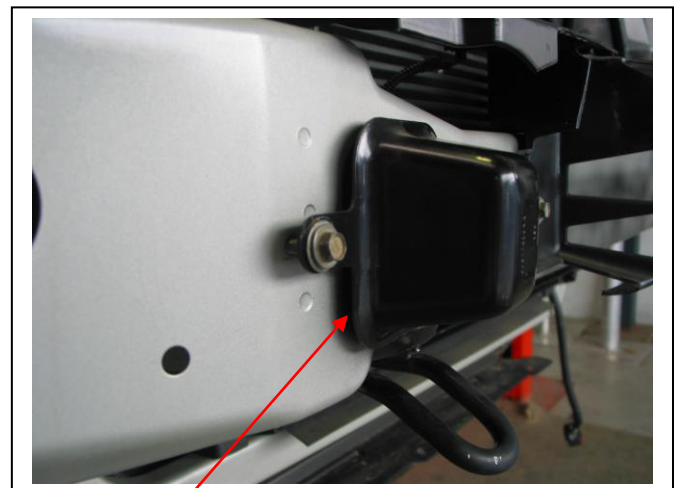
Periodically check bolts and nuts for correct tightness, especially if travelling on rough roads.

**FITTING KIT**

2 – Steel mounting brackets.	2 – M6 spring washers.
2 – Two bolt plates.	2 – M6 nuts
2 – One bolt plates.	5 – M6 x 20 bolts.
2 – 3/8 x 1 1/2 bolts.	3 - M6 nyloc nuts
8 – 3/8 nuts.	1 – ECB Indicator / Park light kit. <b>(NOT LED)</b>
10 – 3/8 flat washers.	1 – Pair ECB fog lights
8 – 3/8 spring washers.	4 – ECB fog light trims. (two fitted to bar)
6 – 1/2 x 1 1/2 bolts (two out for packaging)	10 – Cable locks.
6 – 1/2 nuts (two out for packaging)	1 – 1200mm length 6mm clip lock trim.
12 – 1/2 flat washers. (four out for packaging)	2 – 800mm lengths 6mm clip lock infill trim.
6 – 1/2 spring washers.	2 – 3ml bottles Loctite gel adhesive
8 – M6 flat washers.	6 – 25mm Plastic button plugs



**Figure 1** – Shown removing grille



**Remove** **Figure 2**



East Coast Bullbars (ECB Pty Ltd)

Tel: 07 3897 5700

Fax: 07 3283 1168

ecb@ecb.com.au www.ecb.com.au

29 Snook St  
Clontarf QLD 4019  
Australia

Po Box 122  
Margate QLD 4019  
Australia

WORLD'S BEST  
ALLOY BULLBARS

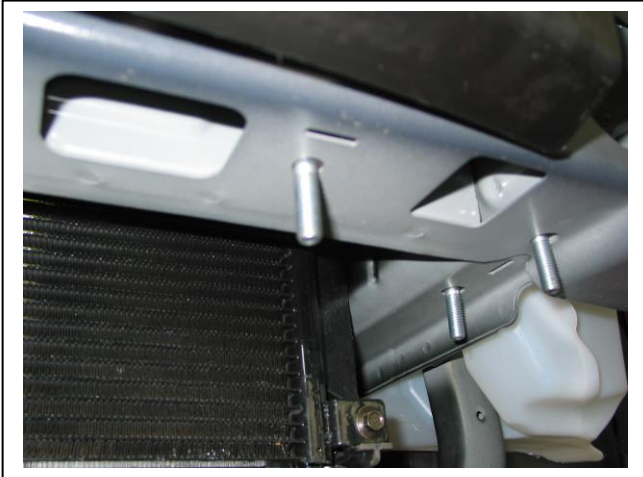
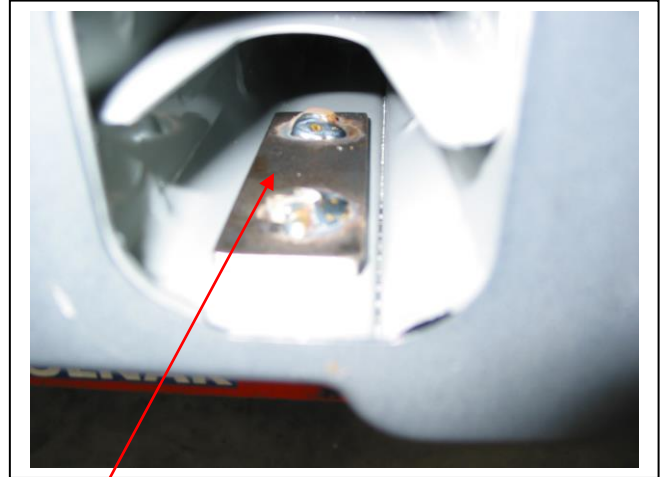


Figure 3 – Passenger side shown



Two bolt plate

Figure 4



Figure 5 – Before cut

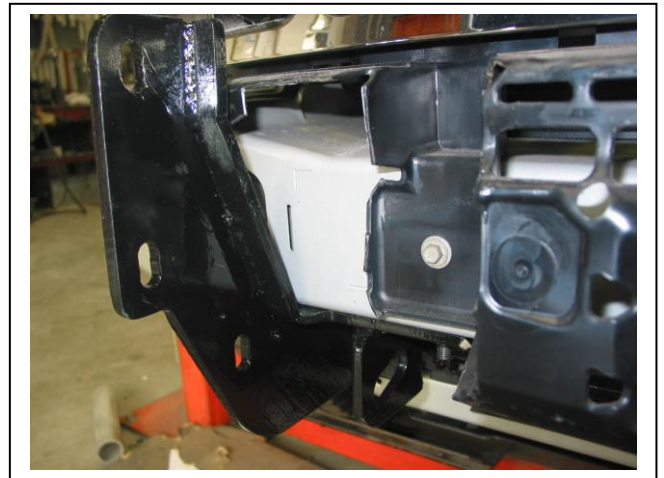


Figure 6 – After cut



Figure 7

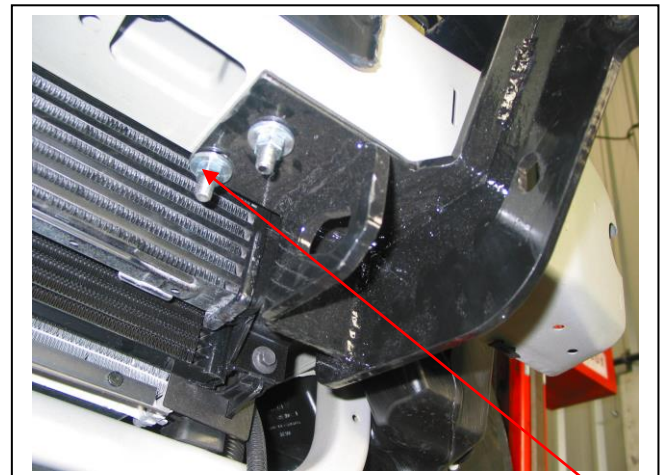


Figure 8 – Drill rear bolt hole with 10mm drill bit



East Coast Bullbars (ECB Pty Ltd)

Tel: 07 3897 5700

Fax: 07 3283 1168

ecb@ecb.com.au www.ecb.com.au

29 Snook St  
Clontarf QLD 4019  
Australia

Po Box 122  
Margate QLD 4019  
Australia

WORLD'S BEST  
ALLOY BULLBARS

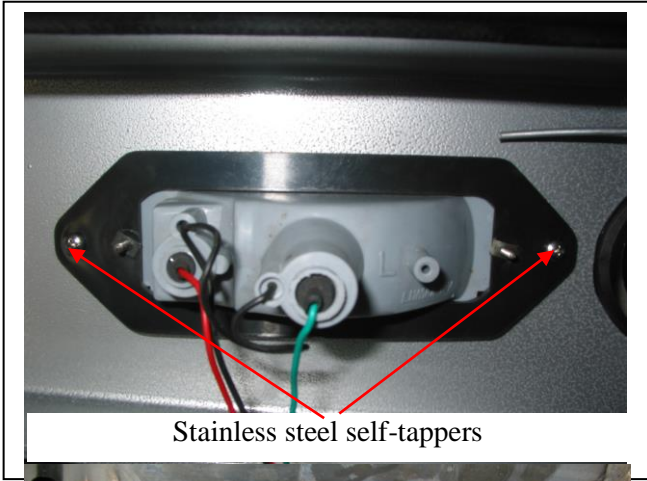


Figure 9



Figure 10



Figure 11



Figure 12 – Attach 6mm black clip lock trim to centre and infills to either side

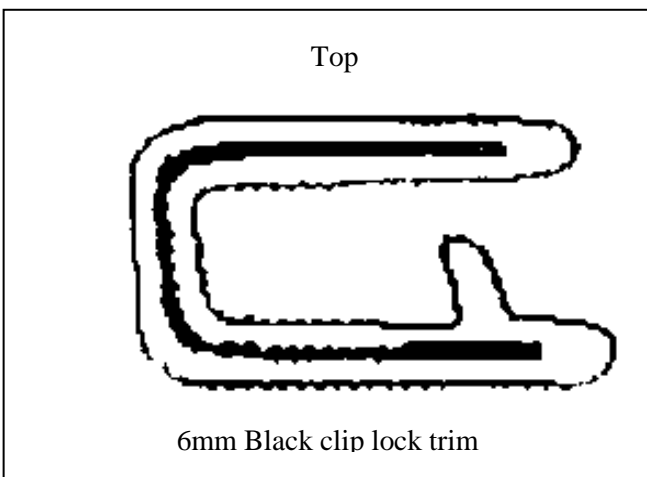


Figure 13



Figure 14



East Coast Bullbars (ECB Pty Ltd)

Tel: 07 3897 5700

Fax: 07 3283 1168

ecb@ecb.com.au www.ecb.com.au

29 Snook St  
Clontarf QLD 4019  
Australia

Po Box 122  
Margate QLD 4019  
Australia

WORLD'S BEST  
ALLOY BULLBARS



Figure 15

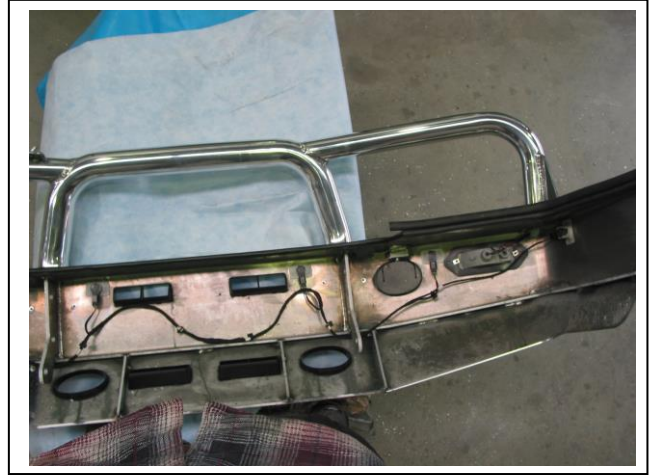


Figure 16



Figure 17 – Front view shown



Figure 18 – Side view shown



**WORLD'S BEST  
ALLOY BULLBARS**

**East Coast Bullbars (ECB Pty Ltd)**

Tel: 07 3897 5700

Fax: 07 3283 1168

ecb@ecb.com.au www.ecb.com.au

29 Snook St  
Clontarf QLD 4019  
Australia

Po Box 122  
Margate QLD 4019  
Australia

**We value your comments**

Dear Fitter,

ECB would like to know how you went with the installation of this product. We value your comment and may need to contact you to clarify some details so please complete your contact details clearly.

We would appreciate if you could complete as many of the following details as possible.

<b>Your Name:</b>	<b>Your contact No.</b>
<b>Product Part No.</b>	<b>Product Invoice No.</b>
<b>Product Description:</b>	<b>Make, model, and year of vehicle:</b>
<b>Product Work Order No.</b>	<b>Company your from/Company product purchased from:</b>

**Date of Fitment:** \_\_\_/\_\_\_/\_\_\_

Was the fitting hardware supplied complete?

Yes

No

If no what was not supplied

---

---

---

Did the installation go well?

Yes

No

Please provide comments

---

---

---

Please draw diagrams if you need to.

**Post to**  
Reply Paid 122  
PO Box 122

**Fax to**  
(07) 3283 1168



**WORLD'S BEST  
ALLOY BULLBARS**

**East Coast Bullbars (ECB Pty Ltd)**

Tel: 07 3897 5700

Fax: 07 3283 1168

ecb@ecb.com.au [www.ecb.com.au](http://www.ecb.com.au)

29 Snook St  
Clontarf QLD 4019  
Australia

Po Box 122  
Margate QLD 4019  
Australia

Margate QLD 4019





East Coast Bullbars (ECB Pty Ltd)

Tel: 07 3897 5700

Fax: 07 3283 1168

ecb@ecb.com.au www.ecb.com.au

29 Snook St  
Clontarf QLD 4019  
Australia  
Po Box 122  
Margate QLD 4019  
Australia

WORLD'S BEST  
ALLOY BULLBARS

# DESPATCH CHECKLIST BJ70SY

ICZBK CJ70



Work Order #	
Finish:	
Transport:	
Due Date:	

- 1 – Bash plate
- 2– Steel mounting brackets
- 2 – Two bolt plates
- 2 – One bolt plates
- 1 – Bolt Kit
- 6 - 25mm Plastic button plugs (bungs) (*in bolt kit*)
- 2 - Tube of glues (*in bolt kit*)
- 1 –ECB indicator / park light kit. **\*\*\* NOT LED – STANDARD**

**See other side of  
this page for  
photos of all  
mounts**

**INDICATOR / PARK LIGHT ONLY \*\*\***

- 1 – Pair ECB Fog lights.
- 2 – Fog light trims.
- 1 – 1200mm length 6mm clip lock trim.
- 2 – 800mm lengths 6mm clip lock infill trim.
- 2 – ECB Overriders – **Fitted to Bar**
- 4 – 6mm Air Scoops – **Fitted to Bar**
- 2 – Fog light trims – **Fitted to Bar**
- 



Is this product “the best it can be” Yes \_\_\_\_\_ / \_\_\_\_\_  
Wrapper’s initials / Checker initials

If **NO** fix before continuing

All parts checked and completed by:

Nut and bolts: \_\_\_\_\_ Date \_\_\_/\_\_\_/\_\_\_

Order control: \_\_\_\_\_ Date \_\_\_/\_\_\_/\_\_\_

Final wrap check: \_\_\_\_\_ Date \_\_\_/\_\_\_/\_\_\_



East Coast Bullbars (ECB Pty Ltd)

Tel: 07 3897 5700

Fax: 07 3283 1168

ecb@ecb.com.au www.ecb.com.au

29 Snook St  
Clontarf QLD 4019  
Australia

Po Box 122  
Margate QLD 4019  
Australia

WORLD'S BEST  
ALLOY BULLBARS

